



**CONNECT.
TRANSFORM.
GROW.**

Afri-Access will showcase key industry sectors looking for growth across borders and internationally. The engagement and Interaction with African and International Investors & partners will provide a business platform for funding, access to markets and mentorships that will ensure future success & sustainability for these established businesses.

Afri-Access is an event that creates smart, curated encounters that will lead to long term business relationships & growth. Delivered by global leader in exhibitions RX Africa.

Afri-Access 2022 will focus on Agri-Access spotlighting Côte d'Ivoire and aimed at the specific sectors of agri-tech, tea, coffee food & beverage and Tech-Access spotlighting Rwanda aimed at the tech, cyber security, ICT infrastructure sectors.

The events will give exclusive access to bring the world to Africa through empowered networking content, conferences and material will serve as a growth conduit for Africa.

FOCUS COUNTRIES



The African continent is poised for growth given the policies and reforms that have been implemented in recent years. Current policies and agreements promise significant gains, including economic diversification, structural transformation, technological development and job creation. Forecasts with regards to the new policies and reforms predict \$1,2 billion consumer market spend for African businesses and \$4 trillion in estimated private and business to business spend along with 13 million to 16 million new jobs. The World Bank predicts that by 2035 the volume of total exports of manufactured goods will increase by 29%, whilst intra-Africa manufacturing trade climbs 110% and manufacturing exports to the rest of the world rise 46%.

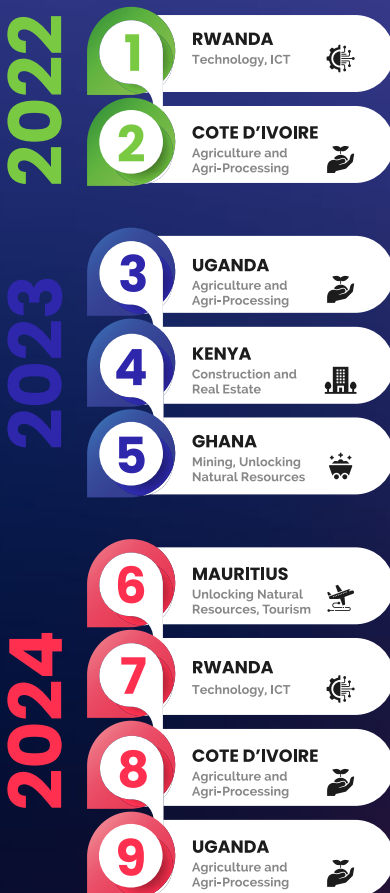
BENEFITS

- One-on-one business meetings that lead to sustainable business partnerships.
- Curated encounters based on your specific needs.
- Focused platform to ensure investors are able to meet established technology companies from Rwanda
- Educational sessions to ensure you keep up to date with International & Continental Trends
- Networking Opportunities
- Expose your company to a group of targeted international investors

SECTOR PARTICIPATION

- Education
- Natural Resources
- Construction
- Utilities
- Transportation
- ICT
- Financial Services
- Sustainability and energy development
- Agriculture and Agri-Innovation
- Production and Manufacturing
- Healthcare and medicine

2022 – 2024 ROAD MAP



CONTACT US



PAPY LUZALA

Commercial and Government Affairs Manager, Africa

T: +27 (0)11 549 8300

C: +27 (0)82 558 8214

E: papy.luzala@reedexpoafrika.co.za

W: www.afri-access.africa

Built by



www.rxglobal.com

